

# Good Neighbour Policy

---

## Purpose

The Dawson Mine Good Neighbour Policy (“the Policy”) outlines our commitment to being a responsible operator and a respectful Neighbour. It explains the key areas where our operations may affect nearby landholders, how Neighbours can raise concerns and the actions Dawson Mine may take to reduce or address impacts.

## Principles

The Policy is built on the following principles:

- We care for and respect our Neighbours, their livelihoods and their way of life;
- We strive for continuous improvement in our environmental and social performance; and
- We comply with all legal and regulatory requirements.

## Focus areas

This Policy focuses on the five main areas of impact identified during engagements with our Neighbours.

| Focus area                                 | Meaning when used in the Policy.   |
|--|--|
| Dust                                       | Dust and/or particulate matter resulting from mining activities.   |
| Noise                                      | Noise resulting from mining activities.  |
| Airblast overpressure and ground vibration | Airblast overpressure and vibration from mining activities (see ‘Dawson Mine Blasting Factsheet’ for further information <sup>1</sup> ). |
| Direct or excessive nighttime light        | Light from mining operations shining into a Neighbour’s home at night.   |
| Poor driver behaviour                      | Unsafe or inappropriate driving behaviour by employees and contractors on public roads <sup>2</sup> used to access Dawson Mine.          |

## Scope

This Policy applies to people who own and/or live on property within a 2km radius of Dawson Mining Leases south of the Dawson Highway and to the north of the Dawson River.

---

<sup>1</sup> Please contact the Social Performance Specialist at the Moura Town Office for a copy of the ‘Dawson Mine Blasting Factsheet’.

<sup>2</sup> see <https://www.qld.gov.au/transport/safety/rules/road>

A map showing the areas included in the Policy is provided in Appendix A of the Policy.

### Exclusion from scope

The Policy does not apply to or in connection with:

- Properties leased from Anglo American; and
- Activities associated with Exploration Permits for coal or Mineral Development Licences.

Neighbours whose properties are not covered by this Policy can still submit grievances. These grievances will be managed through the Dawson Mine Grievance Procedure<sup>3</sup> rather than this Policy.

## **Actions to address focus area impacts on Neighbours**

Dawson Mine may offer the following actions to prevent or reduce impacts on Neighbours in the identified focus areas. Where a Neighbour agrees, Dawson Mine will arrange and pay for these actions to be carried out.

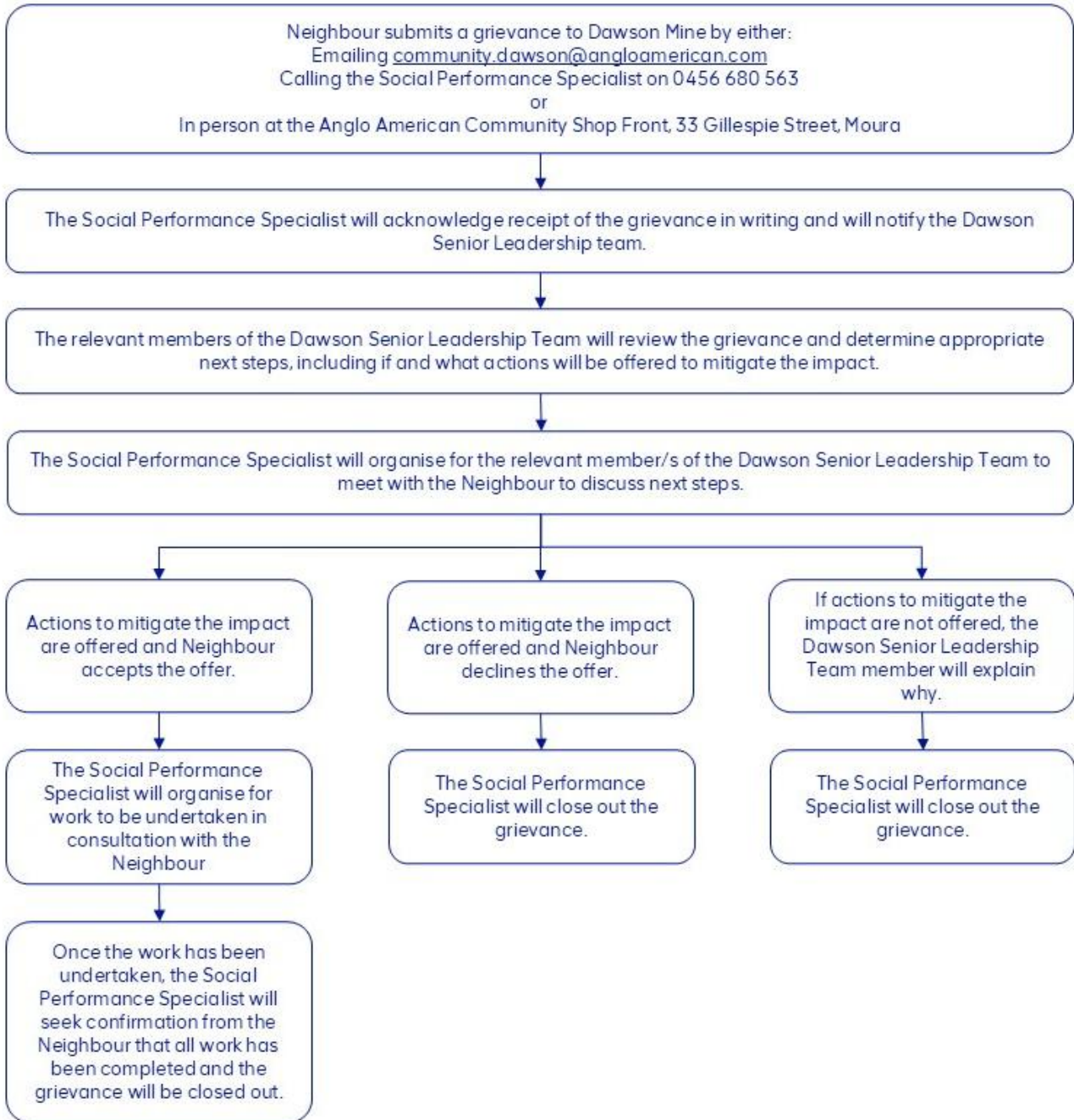
| <b>Focus area</b>                          | <b>Actions</b>  |
|--|---|
| Dust                                       | <ul style="list-style-type: none"> <li>• The choice of (once per year and residential houses only)               <ul style="list-style-type: none"> <li>○ an external house clean (excluding roof); or</li> <li>○ water tank clean and top up; or</li> <li>○ roof clean; or</li> <li>○ air conditioning clean.</li> </ul> </li> <li>• One-off (cannot be re-offered if already received);               <ul style="list-style-type: none"> <li>○ First flush system for domestic water tanks (for residential houses only); or</li> <li>○ Screening plants (to be collected in August in the year they are offered).</li> </ul> </li> </ul> |
| Noise                                      | <ul style="list-style-type: none"> <li>• Undertaking noise monitoring.</li> <li>• Subject to the type and level of noise, Dawson Mine may offer adaptations to reduce noise inside a residential dwelling, for example double glazing, additional insulation etc.</li> </ul>  |
| Airblast overpressure and ground vibration | <ul style="list-style-type: none"> <li>• Offering a Baseline Structural Condition Report on which any potential future damage from blasting will be assessed.</li> </ul>  |
| Direct or excessive nighttime light        | Relocation of light source/s  |
| Poor driver behaviour                      | Undertake internal investigation and address as appropriate   |

Dawson Mine and a Neighbour may also agree in writing to alternative arrangement identifying actions to address individual impacts in relation to one of the focus areas (excluding matters relating to driver behaviour on public roads).

<sup>3</sup> Please contact the Social Performance Specialist at the Moura Town Office for a copy of the 'Dawson Mine Grievance Procedure'.

## Process

The Good Neighbour Policy is triggered when a Neighbour submits a grievance about one or more of the focus areas. Once a grievance has been submitted to Dawson Mine, the following process will be followed.



## Review

Dawson may review this Policy at any time, but a scheduled review will be five years after being adopted.

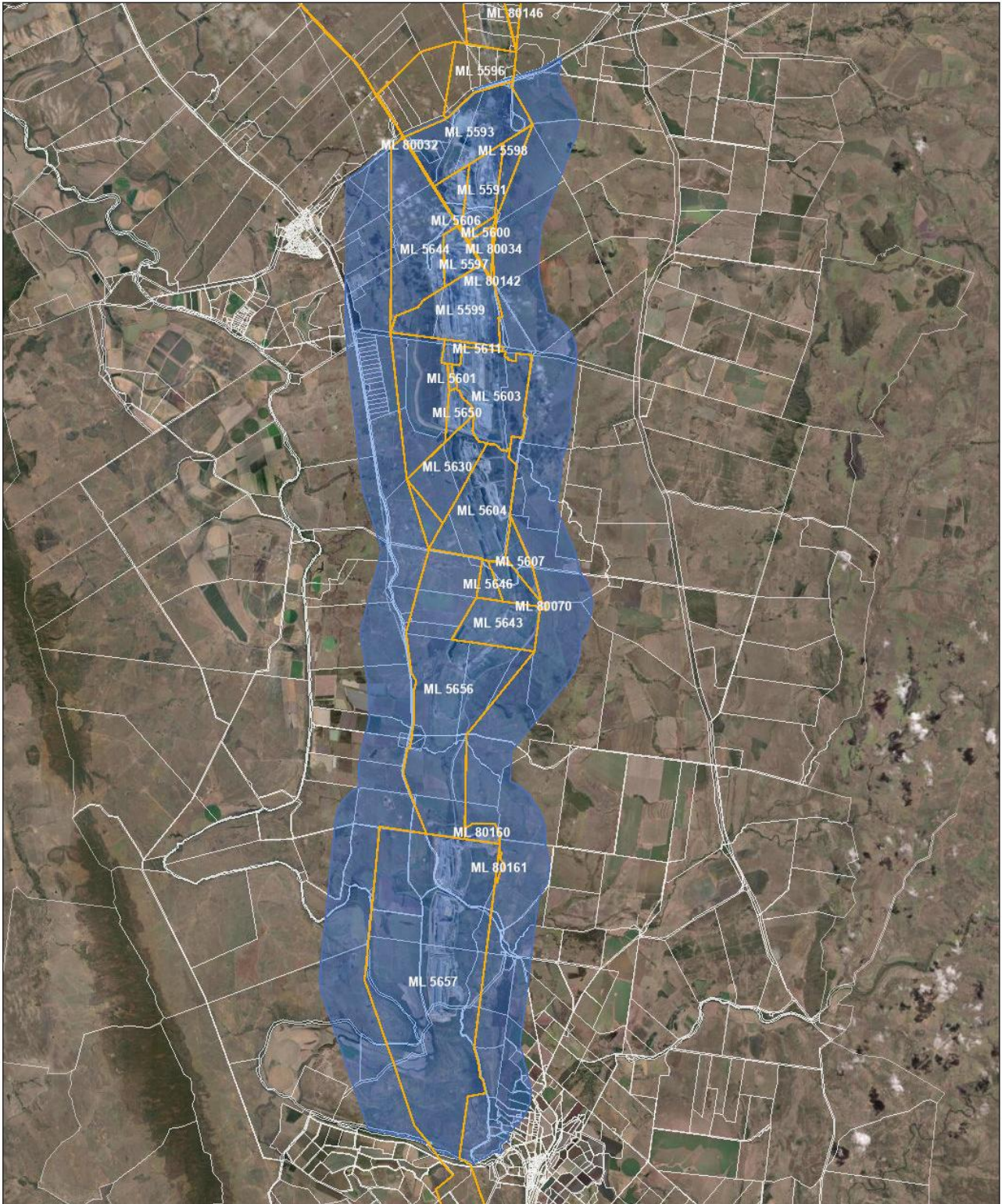
## Approval

*Matt Stevens*

Matt Stevens  
General Manager/SSE

7/05/2026

# Appendix A: Dawson Mine Good Neighbour Policy Area Map



14/11/2025

- Mining Lease (ML)
- Dawson Good Neighbour Policy (2km)
- Property Boundaries
- World Imagery

- Low Resolution 15m Imagery
- High Resolution 60cm Imagery
- Citations
- 38m Resolution Metadata

