

DAWSON MINE COMMUNITY UPDATE

Anglo American is committed to providing regular updates on the Dawson mine road access issues and other mine information that will be of interest to the community and stakeholders.

CONTACT US

Questions or feedback:

Paul Seidel
Phone: 07 4990 9463
Email: Dawson.Community@AngloAmerican.com

Media enquiries:

Tamsin Tier
Phone: 0427 535 927
Email: Met.Coal.Communications@AngloAmerican.com

VISIT US

Opening hours are 8am to 6pm,
Monday to Friday at:
33 Gillespie Street, Moura.

Appointments are available outside of these times, please call:
0467 729 484.

THREE CHAIN ROAD INFRASTRUCTURE PROCEEDS

Anglo American and Banana Shire Council have announced construction of the new Three Chain Road project is to commence in October 2018.

The 12.5 kilometre major regional road will connect the Leichhardt Highway to the Dawson Highway, across the Dawson mining lease, replacing the section of Gibihi Road closed in November 2017.

As the road will be major infrastructure for the Moura community, it has been specifically designed for all weather conditions and provides improved engineering to ensure access during times of flood. Anglo American has begun procurement activities in preparation for construction, including sourcing major culverts, tunnel arches and other long-lead items.

If you have any feedback or questions please contact: **Dawson. Community@angloamerican.com** or phone 07 4990 9463. We will continue to work closely with Banana Shire Council and the local community as we complete this project.

MEMORIAL WAY AND VIEWING PLATFORM

An additional 4.3 kilometre road, turning off from Three Chain Road will be constructed leading up to a viewing platform, which will encourage local tourism.

The viewing platform will overlook sections of the Dawson Mine and will include the plaques from the viewing platform that existed on Gibihi Road

Anglo American will work with the Dawson Community Reference Forum to review and update the display of the viewing platform.

DAWSON HIGHWAY INTERSECTION

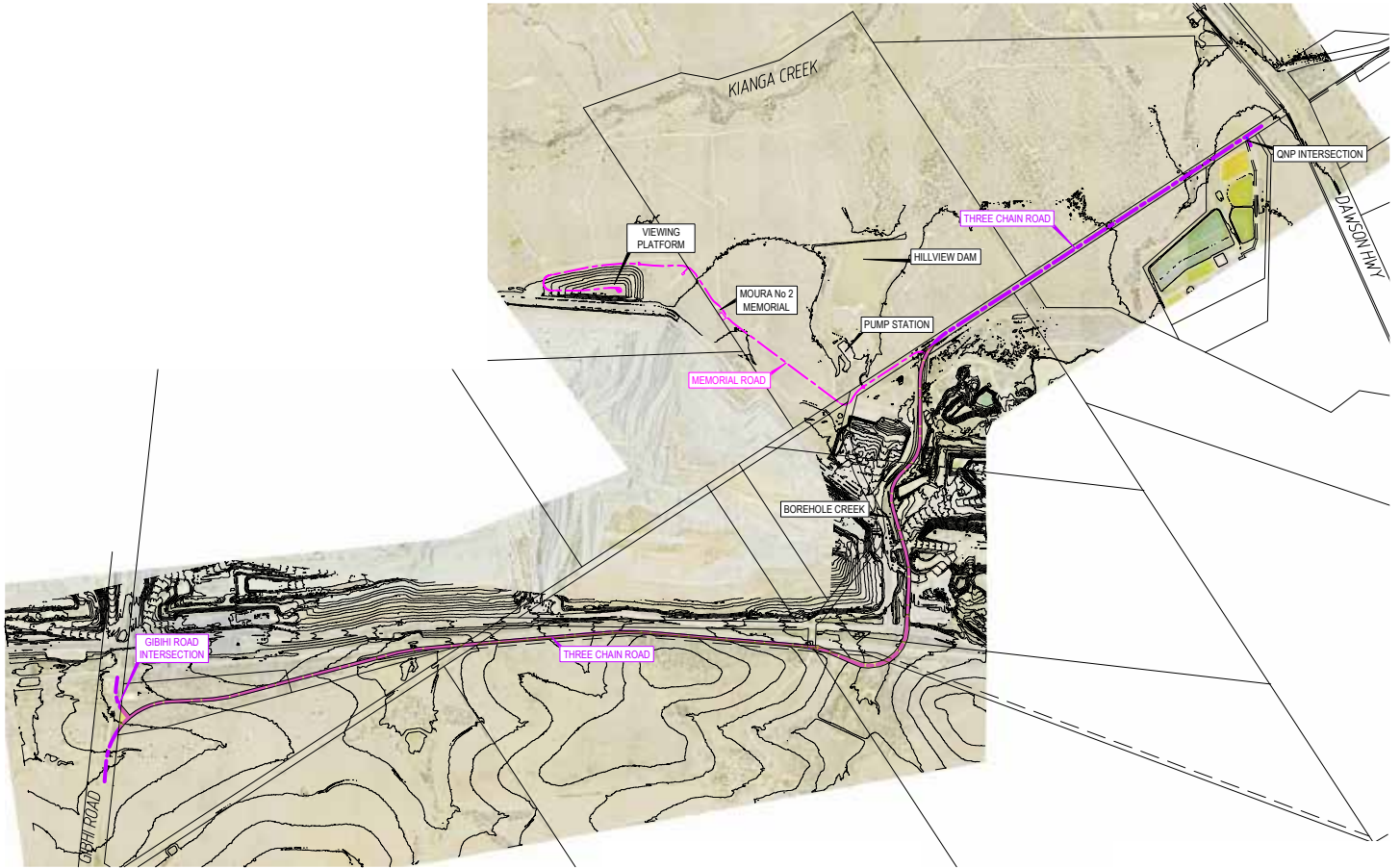
As part of the infrastructure design, a re-designed, safer intersection between the new Three Chain Road and the Dawson Highway will be constructed.

The new intersection has been designed to accommodate safer access based on the expected increase in traffic.

PROCUREMENT PROCESS

Anglo American and Banana Shire Council will work with locally-based suppliers for the duration of this project. Tenders for major work packages will be issued to local contractors in October.

MAP OF NEW THREE CHAIN ROAD



100,000+
CUBIC METRES OF
ROAD

12.5Km
LENGTH OF THREE
CHAIN ROAD

10m
FORMATION

8m
BITUMEN SEAL

4.3Km
DEDICATED ROAD TO
VIEWING PLATFORM

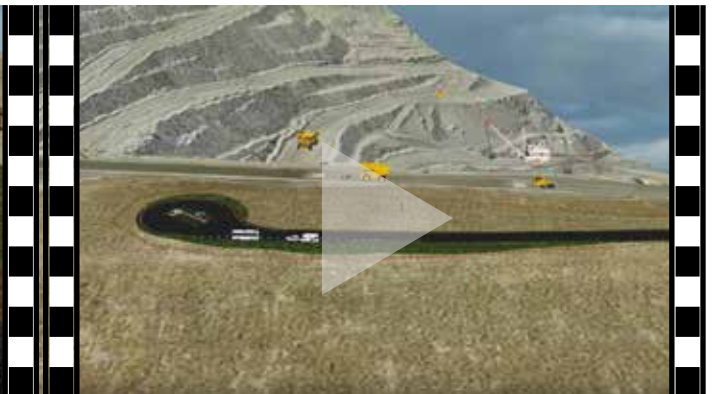
WATCH

Two flyover videos have been developed to provide an overview of Three Chain Road and the road to the viewing platform. Visit www.angloamerican.com.au/dawson-community to watch:

Three Chain Road:



Viewing Platform



Please note there will be a turnoff from Memorial Way to the Moura No 2 Memorial that is not depicted in this video.