

CAPCOAL

Capcoal is a combined open cut and underground operation that will produce 11 million tonnes per annum (Mtpa) of hard coking and pulverized coal injection (PCI) coal from 2014.

LOCATION

- Centre of the Bowen Basin in Central Queensland, 25 kilometres south west of the purpose built town of Middlemount;
- Adjacent to Anglo American's Foxleigh mine;
- Approximately three hours drive south west of Mackay and three hours drive north west of Rockhampton

LEASE SIZE

- 33,513 hectares.



HISTORY

- Open cut coal mining started at German Creek mine in late 1981;
- Underground coal mining started at Southern Colliery in 1988,
- Lake Lindsay deposit purchased in 2002;
- Open cut coal mining moved to Capcoal's Oak Park lease in 2004;
- First coal through the Lake Lindsay Coal Handling Preparation Plant in May 2008.

COAL PRODUCTION AND RESOURCES

- Capcoal comprises two underground mines (Grasree and Aquila) and two open cut mines (Lake Lindsay and Oak Park);
- Produces more than 7.5 Mtpa of prime quality hard coking and PCI coal;
- At December 2014, estimates for ROM reserves are approximately 179 Mt of predominantly hard coking coal and minor export thermal quality, with an additional 144 Mt of mineable in-situ resources outside the current mine layout.



Capcoal dragline.



Middlemount junior footballers took part in a skills clinic with stars from the Brisbane Broncos including Dale Copely, Corey Norman and Michael De Vere.

CUSTOMERS

- Steel manufacturers in Japan, Taiwan, Korea, India and throughout Europe.

OWNERSHIP AND OPERATION

- 70% Anglo American, 30% Mitsui Coal Holdings;
- Managed and operated by Anglo American.

SUSTAINABLE DEVELOPMENT

- As part of Anglo American, Capcoal is committed to working together with our stakeholders – our investors, our partners and our employees – to create sustainable value that makes a real difference, while upholding the highest standards of safety and responsibility across all our businesses and geographies;

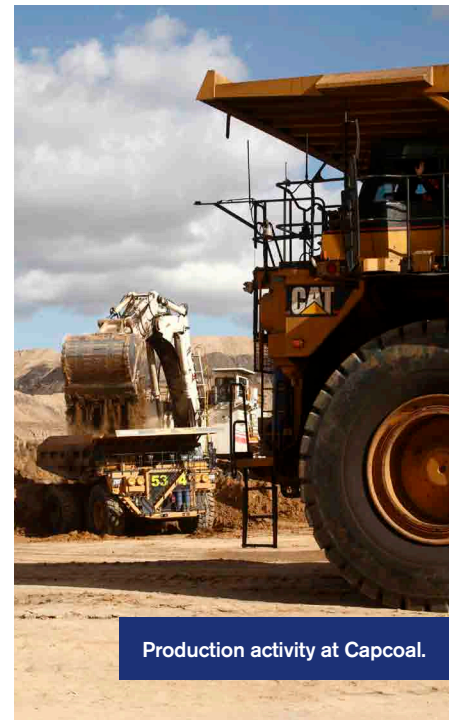
- Capcoal is the main employer in the Middlemount community and has a proud history of supporting sustainable development initiatives within the local district.

REGIONAL PROFILE

- The majority of Capcoal employees live in Middlemount (population 3,000);
- Coal mining, beef and grain production are the local area's main industries.

CULTURAL HERITAGE

- The Barada Kabalbara Yetimarala People are the traditional owners of Capcoal.



Production activity at Capcoal.

ANGLO AMERICAN

201 Charlotte Street
Brisbane QLD 4000
GPO Box 1410
QLD 4001 Australia

T +61 (0) 7 3834 1333
F +61 (0) 7 3834 1366

www.angloamerican.com.au

Real Mining. Real People. Real Difference.